



MONTHLY MEMBERSHIP PROGRESS REPORT

District A 1

Results as of: 5/31/2016

GMT: CHRIS LEWIS

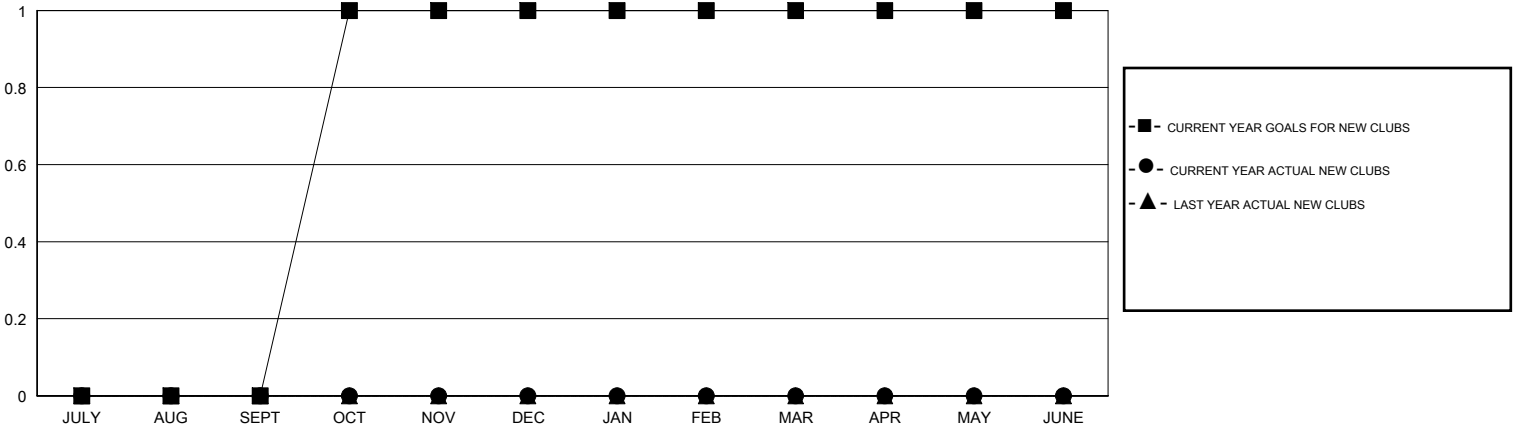
LOCATION ONTARIO

GMT CA 2

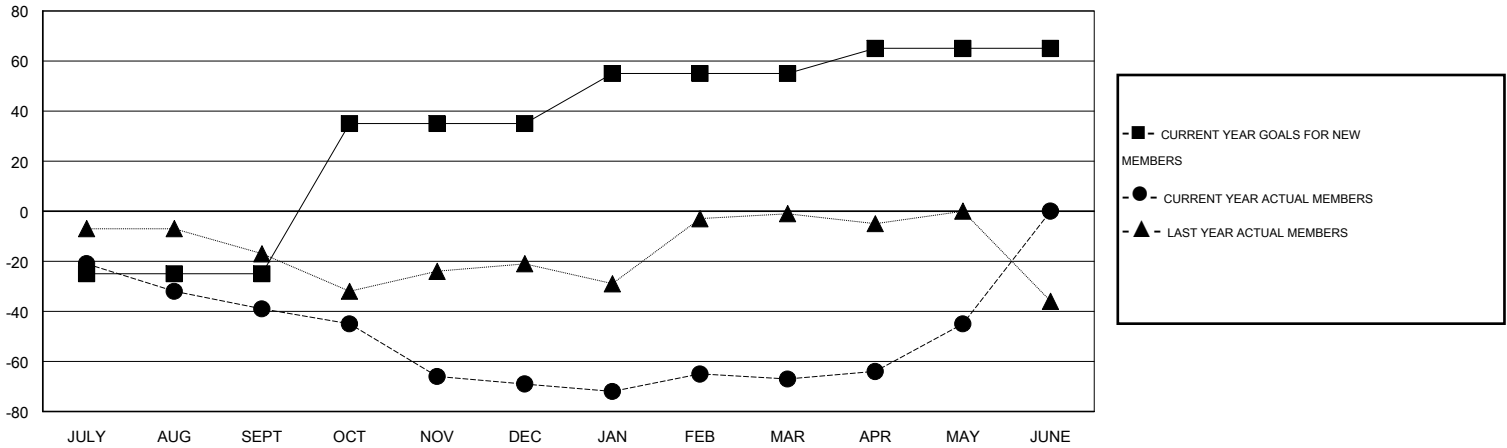
Clubs				
RESULTS FOR 2015-2016				
QUARTER	NEW CLUB GOAL	NEW CLUBS	DROPPED CLUBS	NET GAIN/LOSS
JULY/AUG/SEPT	0	0	0	0
OCT/NOV/DEC	1	0	0	0
JAN/FEB/MAR	0	0	0	0
APR/MAY/JUNE	0	0	0	0

Members				
RESULTS FOR 2015-2016				
QUARTER	NEW MEMBER GOAL	CHARTER AND NEW MEMBERS ADDED	DROPPED MEMBERS	NET GAIN/LOSS
JULY/AUG/SEPT	-25	11	50	-39
OCT/NOV/DEC	60	36	66	-30
JAN/FEB/MAR	20	22	20	2
APR/MAY/JUNE	10	40	18	22

GOALS AND ACTUAL NEW CLUBS CUMULATIVE



GOALS AND ACTUAL MEMBERS CUMULATIVE



DROPPED CLUBS: 0	
<u>DROPPED MEMBERS</u>	
DECEASED	24
CLUB CANCELLED	0
OTHER	130
TOTAL	154

24 CLUBS OF 44 ADDED 1 OR MORE NEW MEMBERS

<u>GENDER DISTRIBUTION</u>	
MALE	990 (80.62%)
FEMALE	238 (19.38%)

[CLICK HERE FOR HEALTH ASSESSMENT DATA](#)

FAMILY UNIT MEMBERS	197
HEAD OF HOUSEHOLD	97
NON-HEAD OF HOUSEHOLD	100